



**HIGHVELD**  
INDUSTRIAL PARK

**CLIENT PORTFOLIO**

**OUR TENANTS**

# INDEX

**HIGHVELD INDUSTRIAL PARK OVERVIEW**  
**ABOUT US**  
**OUR OFFERINGS**  
**LOGO PAGE**  
**TENANT DIRECTORY**

## OUR TENANTS

**AIT**  
**CMEJV**  
**FUWELA**  
**EARTHMOVING MEGA SPARES**  
**H. PISTORIUS**  
**HIGHVELD GAS AND GEAR**  
**LETHOLWAZI TRADING AND PROJECTS**  
**LIZWILE ENGINEERING**  
**LUMA ENGINEERS**  
**MAKOYA GROUP**  
**MASECHABA ENGINEERING**  
**MIHULA HOLDINGS**  
**NOVO**  
**NTOFU ENGINEERING SERVICES**  
**PHAMBILI SERVICES**  
**PPC CEMENT**  
**RIVER ENERGY**  
**SHUMBA SOLVE**  
**STEMWIZE**  
**TLOWANA RESOURCES**  
**TODA PRODUCTS**  
**VEPPES**  
**VR DRAGLINE**  
**ZANRUNIX HIGHVELD COLLIERIES**

## SUPPORT SERVICES

**DIESELWERKE**  
**Hi-TC TRAINING CENTRE**  
**HIGHVELD LABORATORY SERVICES**  
**LUNCH BOX**  
**MIDCITY PROPERTY MANAGEMENT PARTNER**  
**SMART SKILLS CENTRE**  
**VULA IZANDLA**



# Highveld Industrial Park

## Overview



Highveld Industrial Park is committed to creating a sustainable industrial hub for small, medium and heavy industry in Mpumalanga.

This rental hub specialises in providing solutions for industry's space requirements. It is the ideal location for local, national and international business, strategically situated close to eMalahleni in Mpumalanga.

On the Maputo corridor adjacent to the N4 and N12 highways with one of the largest privately owned rail sidings, linked to major ports including Richards Bay, Maputo and Durban.

Contact Highveld Industrial Park:

Email: [marketing@hipark.co.za](mailto:marketing@hipark.co.za)

Tel: +27 (0) 13 010 6002





## ABOUT US

Logistics and industrial rental hub, specialising in providing solutions for industry's space requirements.

It is the ideal location for local, national and international business, strategically situated close to eMalahleni in Mpumalanga.

On the Maputo corridor adjacent to the N4 and N12 highways with one of the largest privately owned rail sidings, linked to major ports including Richards Bay, Maputo and Durban.



**Serves**  
**South Africa's**  
**growing industrial**  
**sector with**  
**integrated offerings**



**24/7 SECURITY SURVEILLANCE**

**A-GRADE PERIMETER SECURITY**

**3 WEIGH BRIDGES**

**STRATEGIC LOCATION**

ON-SITE EMERGENCY SERVICES

**COMPRESSED GAS STATION**

**TRAINING CENTER**

**6 LECTURE ROOMS FULLY EQUIPPED**

**8 ADMINISTRATION OFFICES**

**1 X METALLURGICAL & CHEMICAL LAB**

**2 AIR SEPARATION UNITS**

**0% LOAD SHED**

**EXPORT HUB**



**30 000 SQUARES WORKSHOPS WITH CRANES**

**9 000 SQUARES WORKSHOPS WITHOUT CRANES**

**16 000 SQUARES WAREHOUSES**

**21-LINE MARSHALLING YARD**



**100 RAIL TRUCKS CAN BE ACCOMMODATED**







RELIABLE  
UTILITIES



24/7  
SECURITY



STRATEGIC  
LOCATION



ESTABLISHED  
INFRASTRUCTURE



SITE SUPPORT  
AND SERVICES



**Reliable and  
Uninterrupted  
Industrial  
Utilities**



**Strategic  
Location**



**24/7  
Security**



**Site support and  
Services**



**Established  
Infrastructure**

# OUR OFFERINGS

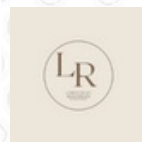




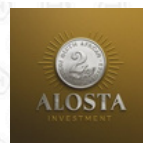
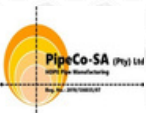
Pablo  
Pearson Solutions (PTY) LTD



NATIONAL YOUTH DEVELOPMENT AGENCY  
OUR YOUTH. OUR FUTURE.



ZEDEK TRANSPORT SERVICES



# OUR TENANTS





# Tenant: Directory

**Afrox**

**AEIM Chemical**

**Air Liquide**

**AIT Processing**

**Alostia  
Investments**

**ArcelorMittal  
Rail &  
Structures  
(AMRAS)**

**Bietjie Kaap  
Coffee Bar &  
Olive Deli  
t/a  
Lunch Box**

**Bushveld  
Minerals**

**Carbon  
Reductant  
Solutions  
(CRS)**

**Brokkr / H  
Pistorius**

**Carbon &  
Mineral  
Resources**

**Concor-Mota-  
Engil Joint  
Venture t/a  
CME JV**

# Tenant: Directory

**Conro 5  
Trading**

**DieselWerke**

**Darling Empire  
Demolition  
and Recycling**

**Desketh**

**Divine Grace  
Coal**

**Direct Lined  
Trading and  
Projects**

**Dhana  
Resources**

**Djanthalo  
Trading  
Enterprise  
(Eco D Car  
Wash)**

**Earthmoving  
Mega Spares**

**Dynamic Build  
Systems**

**Electrocam  
Projects**

**FerroVan  
Trading  
(VIBRO)**



# Tenant: Directory

**Fithari Mining  
Company**

**FM Maepa**

**Fodere/ Anglo  
African Metals**

**Fraser  
Alexander**

**Fuwela  
Consulting**

**Gamatech**

**Highveld  
Laboratory  
Services**

**Heydeck  
Mining  
Solutions**

**Highveld Gas  
and Gear t/a  
Ferrogas**

**Horona  
Trading**

**Highveld Non-  
Ferrous  
Smelters**

**Highveld  
Robusteel**

# Tenant: Directory

**Highveld  
Training  
Centre**

**Hydrolime / KP  
Lime**

**Hillpan**

**Impofu Coal**

**Langamed  
Emergency  
Management**

**JJ & Daughters  
Solutions**

**Lesedi Steel &  
Shafting**

**Letholwazi  
Trading and  
Projects**

**Lizwile  
Engineering**

**Luma  
Engineering  
and Projects**

**Maphologela  
Valves  
Automation  
Supplier and  
Electric**

**Makoya Supply  
Chain Holdings**



# Tenant: Directory

**Masechaba  
Engineering**

**MDLS Projects**

**Mihula  
Holdings**

**MRS Scrap  
Holding**

**Nafasi Water  
Technologies**

**Nafasi  
Innovations**

**Novo Energy**

**Ngcebo Enhle  
Nolwazi  
Security**

**OMV**

**Ntofo  
Engineering**

**Pablo Pearson  
Solutions**

**Pamoja Coal  
Group**

# Tenant: Directory

**P G Metals**

**Phambili  
Services**

**PL De Kock  
Beleggings**

**Pheta Minerals**

**PipeCo SA**

**PPC Cement  
SA**

**Railbridge HM**

**Rams Drill and  
Blast**

**Riaan van  
Niekerk t/a  
Conveyor  
Technologies**

**River Energy  
South Africa**

**Royal Mark  
Trading**



# Tenant: Directory

**SAFreight  
Logistics  
(SAFLog)**

**Sidlydon**

**Signature  
Couriers**

**Shumbasolve**

**South Saharan  
Mining**

**Stemwize**

**Synchor  
Investments**

**Tiscal  
Enterprise**

**Toda Products**

**Tlowana  
Resources**

**To the Detail  
Company**

**Transalloys**

# Tenant: Directory

**Triple P Events  
and Catering  
Management**

**Ventserve**

**Veppes**

**VR Dragline**

**Xram  
Technologies**

**Vuka Matlala  
Trading  
Enterprises**

**Zanrunix  
Mining and  
Others**

**Xpert Mining  
Supplies**





# AIT

## An African Trading House of the Future

Founded in 2017, AIT built its foundation as a pit-to-port solution for bulk commodities trading, servicing both in land and export customers across the globe. AIT continues to invest resources that enable the organisation to spot gaps and opportunities in the global energy mix, providing AIT with the capabilities to supply minerals that power growing economies. AIT continues to establish itself as Africa's preferred bulk commodities trading house, working towards a portfolio of diverse energy producing minerals.

### AIT AT A GLANCE

- Moving over 2 million metric tonnes of bulk commodities per annum.
- Serving markets in over 4 continents.
- Innovative supply chain management providing opportunities for supplier development.
- Diversified leadership & ownership.

Contact AIT:

Email: [info@afintransit.co.za](mailto:info@afintransit.co.za)

Tel: (+27) 72 039 5135

Website: <https://afintransit.co.za/>



**AIT**

Your partner in mining & logistics excellence





# CMEJV

**In 2017 the South African National Roads Agency (SANRAL) awarded the tender for the Msikaba bridge's construction to the Concor Mota-Engil Joint Venture (CMEJV).**

**A partnership between Concor Construction and MECSA Construction.**

**The Msikaba Bridge is a cable-stayed steel deck bridge, currently under construction, spanning the Msikaba River, near Lusikisiki in the Eastern Cape of South Africa.**

**The Msikaba Bridge forms part of the N2 Wild Coast road (N2WC) project, which aims to improve the travel time between Durban and East London for heavy freight vehicles.**

**By providing a high-mobility route through an area that is extremely isolated and under-served by road infrastructure, the N2 Wild Coast Road (N2WCR) will have significant social and economic benefits and act as a catalyst for local and regional development.**



# Fuwela

## Unlocking Sustainable Solutions

Fuwela Consulting is a leading environmental consulting firm in South Africa focused on the resources sector, with extensive in-house expertise in the environmental and social field.

Fuwela Consulting has accumulated a team of in-house specialists that can consult and provide services in a host of environmental disciplines. Where specialist input is required outside the scope of the Fuwela-team, strong associations have been formed with other consulting firms to assist their clients with a wide range of environmental services.

They have over 7 years of consultancy experience in this area of business and they strive to achieve the following: development, empowerment, enabling and maintaining.

Contact Fuwela:

Email:

[admin@fuwelaconsulting.co.za](mailto:admin@fuwelaconsulting.co.za)

Tel: 013 285 0046

Cell: 082 696 4671



**FUWELA**

CONSULTING (PTY) LTD.





# Earthmoving Mega Spares

EMS is a trusted name in the industry, offering top-quality auto electrical and mechanical spare parts for earthmoving machinery and transportation trucks. With years of experience, we pride ourselves on delivering reliable products and services that keep your heavy-duty machinery running smoothly.

Everything you need under one roof.  
Fasteners and consumables include:

**Hi-tensile & Mild Steel:** Hexagon head fasteners, socket screws, nuts, washers, threaded rods, machine screws, roofing products, coach screws, and pins.

**Stainless Steel:** Hexagon head fasteners, socket screws, stainless steel washers, cup square bolts, self-tapping screws, and threaded rods.

**Consumables:** Lectro Kleen, Q20, lock tight, hand cleaner, rags, grease nipples, and O-ring kits.

Contact Earthmoving mega spares:

Tel: 064 659 9747

Email: [info@earthmovingmegaspares.co.za](mailto:info@earthmovingmegaspares.co.za)



Earthmoving Mega Spares (PTY) Ltd





# H. Pistorius

**Seeing change as an  
opportunity**

H. Pistorius & Co, the oldest supplier of agricultural lime in South Africa, is currently located on the HIP premises.

The company acquired a BOF slag dump at HIP without knowing exactly what it wanted to do with it yet, but a visit to China improved its capability to unlock the value still left in these dumps. And in true South African style, even enhanced some of the methods.

The company now extracts and recovers pure steel still present in die BOF slag for smelters, while continuing to produce their main product; ultra-fine agricultural lime. Lime and lime products contain nutrients that can help balance the acidity of agricultural soil when used properly.

Not only does it help to improve the quality of fruits and vegetable crops, but it also aids the soil to better absorb water.

Contact H. Pistorius:

Email: [sales@pistorius.co.za](mailto:sales@pistorius.co.za)

Cell: 0861 245 463

Tel: 012 342 1075



**H PISTORIUS  
& KIE**



# Highveld gas and gear

## Division of FerroGas

Discover the pinnacle of precision and reliability with our cutting-edge gas and welding technologies.

Highveld Gas and Gear, a part of FerroGas situated at Highveld Industrial Park, is an industrial supplier catering to the mining and engineering sectors, particularly in eMalahleni and Middelburg. We specialise in industrial and liquid petroleum gas, welding machines, safety equipment, compressors, power tools, and abrasives. Our commitment to quick deliveries and a wide stock range is matched only by our dedication to customer service and efficient supply chain management. We are also a Level 2 BBBEE contributor.

Contact Highveld gas and gear:

Email: [pikkie@ferrogas.co.za](mailto:pikkie@ferrogas.co.za)  
Website: [www.ferrogas.co.za](http://www.ferrogas.co.za)  
Tel: 082 493 0173







# Letholwazi Trading and Projects

Steven Mdhuli, director of Letholwazi Trading and Projects, enlightened us on the importance of health and safety, especially fire safety rules and equipment. Letholwazi specialises in all types of fire safety equipment, fire extinguishers, the installation thereof, and fire safety services according to health and safety standards.

Letholwazi has been a tenant at HIP since 2018 and in addition, also maintains and services the fire safety equipment of HIP. “We are very happy here, it’s safe and the utilities are reliable which ensures no disruption during work hours”, says Mr. Mdhuli.

He added that “in business, as in everyday life, safety always comes first. We have a dedicated team of certified technicians who are ready to assist in providing the most efficient and effective fire prevention solutions”.

Contact Letholwazi Trading and Projects:

Email: [steven@letholwazi.co.za](mailto:steven@letholwazi.co.za)

Cell: 079 605 6353

Cell: 081 029 6739

Website: [www.letholwazi.co.za](http://www.letholwazi.co.za)







# Lizwile Engineering

**Passionate, Engaging and ambitious**

**Lizwile Engineering was established in 2019 with over 13 years of experience in the manufacturing industry.**

**Specialising in the supply, maintenance and small-scale manufacturing of valves and spares. Servicing the mining industry, petrochemical and power utilities. "The journey of becoming and being a tenant at HIP has been amazing but also empowering.**

**The number of opportunities inside the park are endless, and we are able to network with other tenants in the Park as small business owners. Except for the many advantages inside the Park, HIP's employees are always warm and welcoming and willing to help expand your business with means inside their scope" says Mvelase.**

**Lizwile Engineering supplies products utilized in the conveyance of water, gases and liquids. It has the largest consolidated quality product offering in its industry and is well positioned in terms of the infrastructure at HIP to assist clients.**


**Contact Lizwile Engineering**

**Cell: 066 173 2856**

**Email: [nomagugu@lizwile.co](mailto:nomagugu@lizwile.co).**







# LUMA ENGINEERS

## Expertise you can trust

Luma Engineering mainly specialise in the reconditioning and rewinding of motors, but can assist with the refurbishment of pumps as well.

Chigole Banda, CEO of Luma Engineering, explains that at the moment they have industrial medium voltage motors to refurbish that goes from 6kV up to 11kV.

“We do maintenance of industrial motors in general, but we also support Eskom with strategy, help with plant maintenance, and help with outage management because of our expertise that was build-up over the last 24 years”, he adds.

Contact Luma Engineering:

Email: [chigole@lumaepm.com](mailto:chigole@lumaepm.com)

Cell: 072 522 8469

Tel: 013 591 9050/1



# Makoya Group

The Makoya Group is a niche bulk material enterprise focusing on road-to-rail migration servicing the energy, transportation, agriculture, manufacturing and mining sectors. Based in South Africa, the organisation delivers end-to-end supply chain support and management.

Through the support of our partners including Eskom and Transnet, Makoya has become a specialised service provider for rail, road, sidings and terminal solutions for bulk commodities and cargo in Southern Africa. Whatever it takes, we keep your goods moving.

During the past 10 years, we have made significant investment in growing our expertise and services. We believe that Makoya has built an enviable reputation as a 100% black-owned Level 1 B-BBEE enterprise and we are proud of the role we play in furthering a more progressive South African economy.



Contact Makoya Group:

Email: [info@zhco.co.za](mailto:info@zhco.co.za)

Tel: +27 13 591 9091



**MAKOYA  
GROUP**  
*Innovative Mobility Solutions*





# Masechaba Engineering

We accept clients nationwide as well as neighboring states. Our team's professionalism ensures manufacturing engineering of high quality and is willing and available to provide you with expert advice whenever you wish.

Our ultimate purpose is to understand and fulfill the needs of our customers resulting in long term, multilevel service client relationships. The customers driven purpose require that we earn and retain respect, confidence and loyalty of our customer by serving them so that they will benefit from their association with us.

We specialise in:  
Manufacturing, Fabrication, Engineering & Lineboring on all Earth Moving Machinery

We manufacture & repair:  
Convener Pulleys, Bucket Repairs, H-Frames, Diff Supports, Track Frames, Cylinders, Axles, Hubs, Hardin Pins & Bearings, Steelwork.

Contact Masechaba Engineering:

Email: [masechabamanagement@gmail.com](mailto:masechabamanagement@gmail.com)

Cell: 084 700 6650 or 081 551 4576

Cell: 082 343 2169 or 071 354 8861







# Mihula Holdings

**Creating a  
greener future**

Mihula Holdings has been a tenant at Highveld Industrial Park since July 2018 and is in the business of recycling. Recycling plays a crucial role in promoting sustainability and environmental conservation. Recycling involves the collection, processing, and transformation of waste materials into new products, reducing the need for raw materials and minimizing the amount of waste sent to landfills. Mihula Holdings shreds and bales paper, cardboard, plastic bottles and glass.

Businesses like Mihula contribute to the circular economy by closing the loop, creating a sustainable system where materials can be reused, conserving natural resources, reducing energy consumption, and mitigating the negative impacts of waste disposal.

Contact Mihula Holdings:

071 878 3356







# Novo Energy

We create a sustainable tomorrow by providing advanced, integrated and customised energy solutions through the combination of gas infrastructure and technology, adding value to stakeholders in sub-Saharan Africa. By understanding the complexity of the now, we can build you the right energy mix and model for your business, ensuring your success into the future.

While NOVO began as an integrated natural gas company, specialising in delivering comprehensive fuel solutions to vehicular, industrial, commercial and residential customers by making use of compressed natural gas (“CNG”) technology and pipelines, today NOVO offers a diverse set of solutions grouped together into 3 product offerings:

**NOVO GAS**  
**NOVO INFRASTRUCTURE**  
**NOVO TURNKEY SOLUTIONS**

NOVO's product offerings enable next-generation energy solutions by delivering state of the art gas solutions, infrastructure and full-service solutions that enable our customers' businesses to grow.

Contact Novo Energy:

Email: [info@novoenergy.co.za](mailto:info@novoenergy.co.za)  
Tel: +27 11 100 0270





A photograph of an industrial facility, likely a manufacturing plant. In the foreground, a worker in a green shirt and dark pants is crouched over a large, rectangular metal frame filled with a fine mesh or perforated material. Several other similar frames are visible in the background, arranged in rows. The facility has high ceilings and large windows, with industrial equipment and structures visible in the background.

# **NTOFO**

## **ENGINEERING SERVICES**

**Ntofo is a second-generation company founded in 2005, trading as Ntofo Engineering Services cc(NES) from 2007, currently based in Highveld Industrial Park.**

**Their core business is Heat exchange, ranging from Air over water coolers to air-over Oil coolers, and an array of all types of heat exchangers, and all their fabrication work is ISO-certified. Their work evolved from installing heat exchangers to designing and fabricating heat exchangers and now includes certified steel fabrications. They are a dynamic company consisting of 5 management positions and 21 technically trained staff, with a combined in-house experience that exceeds 100 years.**

**Contact Ntofo Engineering Services**

**Email: [ali@ntofo.co.za](mailto:ali@ntofo.co.za)**

**Website: [www.ntofo.co.za](http://www.ntofo.co.za)**

**Tel: 084 481 5799**



**Engineering Services c.o.**





# PHAMBILI SERVICES

## Custodian of the environment

Phambili Services is a leading waste management company established in 1996 in recognition of the growing need for sustainable integrated waste management solutions in the waste management sector in South Africa. It's also a market leader and prime mover in providing sustainable innovative waste management solutions to meet client needs.

Phambili Services does not subscribe to the "One Size fits All" notion in the provision of waste products and waste services. Their solutions are customised to satisfy client needs and they provide various solutions.

- Waste Management
- Waste Storage
- Waste Planning
- Recycling
- Landfill Management
- Operation and Maintenance
- Waste to Energy Projects
- Cleaning Services
- Training, Mentoring, and Advisory Services

Contact Phambili Services:

Email: [info@phambiliservices.co.za](mailto:info@phambiliservices.co.za)

Website: [www.phambiliservices.co.za](http://www.phambiliservices.co.za)





# PPC Cement

PPC has officially inaugurated its new blending plant in 2023. The facility, located in the Highveld Industrial Park, demonstrates PPC's ongoing commitment to improving efficiencies, reducing turnaround times, and delivering exceptional quality and customer service to all stakeholders in the built environment sector of the Highveld region.

"The opening of this Highveld plant allows us to optimise our logistics through localisation, which is imperative in reducing transport costs and minimising transport-induced carbon emissions," said Bheki Mthembu, head of PPC's inland business unit.

The plant will also be a win for small contractors and entrepreneurs in the region. It will enable PPC to make smaller delivery runs, upwards of 12 tonnes (240 bags), thus catering to micro-enterprises that previously could not afford large material loads.

Contact PPC Cement:

Email: [ContactUs@ppc.co.za](mailto:ContactUs@ppc.co.za)  
Tel: +27 (0)11 386 9000







# RIVER ENERGY

River Energy (“RE”) is a clean energy company focused on providing an integrated coarse to ultra-fine discard coal to energy solution through its unique suite of capabilities, processes and technologies.

RE operates a coal processing business currently recovering significant volumes of discard & waste coal, delivering product into the markets, encompassing coarse, fine and ultra-fine discard & waste feed. RE is uniquely positioned to produce a useable product from discard & waste coal tailings facilities, as well as new discard and waste coal produced each year from current colliery operations.

There is sufficient energy available in coal tailings, discard & waste to provide for South Africa’s energy needs for many years whilst simultaneously processing existing and new tailings to achieve rehabilitation benefits.

RE’s product has a measurably positive impact, reducing the environmental and social footprint over primary coal, and provides part of the solution for South Africa to complete a sustainable journey to a cleaner, lower impact energy future.

Contact River Energy:

Email: [info@riverenergyco.com](mailto:info@riverenergyco.com)

Website: [www.riverenergyco.com](http://www.riverenergyco.com)

Tel: 010 591 2115







# SHUMBA SOLVE

Highveld Industrial Park (HIP) in collaboration with partners MPower and Fledge, unveiled the innovative Highveld Park Gas2Power and SolarPark project.

This initiative signifies a bold step towards sustainable energy solutions and economic progress in the region.

Over the next 3-5 years, the project aims to develop up to 180MW of Solar PV and up to 10MVA of Gas to Power generation units at HIP. The inaugural phase, slated for completion by mid-2024, will encompass 3.6MWp of Solar PV and 1MVA of Gas to Power Generation.

What sets this project apart is its unwavering commitment to efficiency and reliability, underpinned by exhaustive research conducted by the Highveld Park team and energy partners. The primary objective is to unlock the most efficient conversion of gas into power, ensuring not only energy maximisation but also reliability. The backbone of this initiative lies in its modular-based system, meticulously designed for seamless expansion and scalability, thereby ensuring adaptability to future energy demands while steadfastly increasing baseload generation.

SHUMBA  SOLVE







# Stemwize

Stemwize takes pride in pioneering enhanced approaches to managing your mining projects. We begin by acknowledging that by actively listening and fostering robust collaboration, we can collaboratively bring to fruition your aspiration of a mining environment that is both secure and devoid of accidents.

Over time, we have consistently built a reputation as proficient and responsive experts in the industry, consistently augmenting value for our customers throughout the project progression. We empower our customers to dedicate themselves fully to their primary mining activities, while we adeptly manage their technical support services and the intricacies of the consumables supply chain.

## PRODUCT & SERVICE OFFERING:

- Open cast services
- Mining Supplies & Consumables • Blasting related products • Drilling Consumables • Stemming Aggregate • Stemming Aids
- General Mining Services
- Underground Mining Services

Contact Stemwize:

Email: [admin@stemwize.co.za](mailto:admin@stemwize.co.za)  
Tel: +27 13 001 2766

**Stemwize**





# TLOWANA Resources

Tlowana Resources is a diversified chemicals group focusing on the manufacturing and supply of industrial chemicals and water treatment services to our customers in mining, agriculture, pharmaceutical, food and beverage, refractory, petroleum and gas industries as well as water and electrical utilities.

Our business strategy is underpinned by the capabilities (i.e. integration of strategic assets and key competencies) that allows us to deliver tangible value to our clients and access new markets across the globe.

Our operations is comprise of a magnesium oxide business, a specialty and bulk chemicals business, and a water treatment division.

Our approach is to work closely with our clients and supply chemicals and services in the manner that enhances their industrial processes and ultimately their bottom line.

Contact Tlowana Resources:

Email: [info@tlowana.co.za](mailto:info@tlowana.co.za)

Tel: +27 16 362 6099







# Toda Products

Toda supplies stylish PPE, corporate clothing, gifts, and even branding of these items to companies. Bongiwe Thela, director of Toda Products, was born with a passion for business and started Toda Products while she was finishing her course in Business Management at Witbank Campus.

We specialise in:

- Mechanical and electrical equipment;
- Corporate clothing;
- Corporate gifts;
- All types of PPE;
- Protective equipment from head to toe;
- Mining equipment and;
- Mining consumables.

With a safe environment and networking opportunities, Ms. Thela plans on expanding her business. She looks forward to creating employment for other people and having a company that is capable of running itself.

Contact Toda Products:

Email: [info@todaproducts.co.za](mailto:info@todaproducts.co.za)

Website: [www.todaproducts.co.za](http://www.todaproducts.co.za)

Tel: 073 025 4171







# Veppes

## Creating a vibe

Veppes is an aspirational brand founded in 2018 by Sandile Mthombeni. It designs, manufactures, and markets fashionable apparel, accessories, and equipment. The manufacturing is done at the premises in HIP, but Veppes also has a retail store in the Highveld Mall.

Its dominant high-turnover product is denim wear. Inspired by the hip lifestyle of the nightlife and especially music from all over the world. It is predominantly consumed by outgoing young professionals with an appetite for style, residing in both metropolitan and non-metropolitan cities.

Veppes has been a tenant since 2019, and it's great for the organic growth the company is going through.

Contact Veppes:

Cell: 072 679 8329

Email: [veppesogs@gmail.com](mailto:veppesogs@gmail.com)

  
**veppes**<sup>®</sup>  
Originals





# **VR DRAGLINE**

**Unearthing potential at HIP**

**VR Dragline is the expert in earth-moving equipment and everything that entails, from on-site assistance with maintenance in South Africa right up to having a global presence with exporting as well. VR Steel's, which includes VR Dragline, dream is for the VR product range to become a global benchmark and equipment of choice in major mining markets.**

**It's a leading technology company that strives to supply customised earth-moving productivity gains to their global clients and partners, whilst fostering a culture that provides the team members with a harmonious, challenging and rewarding environment in which to grow – both personally and professionally.**

Contact VR Dragline:

Email: [rubina@vrsteel.co.za](mailto:rubina@vrsteel.co.za)







# ZANRUNIX HIGHVELD COLLIERIES

Zanrunix is a mining company that strives to provide exceptional service by exploring coal resources and it's operating in the budding mining town of Emalahleni.

Mr Alfred Sibisi, founder and CEO of Zanrunix Highveld Collieries, says the exploration of coal resources involves the systematic process of locating and evaluating potential coal deposits in a given area. It is a multi-disciplinary approach that combines geological, geophysical, and geochemical methods to assess the quantity, quality, and feasibility of extracting coal from a particular site.

“We’ve been a tenant of HIP since 2020 and we’re actually one of the few lucky mining companies close to HIP, which makes the mining operations, administration and workshops in close vicinity of one another.”

Contact Zanrunix Highveld Collieries:

Email: [info@zhco.co.za](mailto:info@zhco.co.za)

Website: [www.zhco.co.za](http://www.zhco.co.za)

Tel: 013 591 9091





# SUPPORT SERVICES





# NEW TENANT!

Did you know we have diesel on-site?



***DieselWerke***

Efficient System > Reliable Supply  
High Quality at the Right Price

HIP initiative to support your business.



ARRANGE YOUR PRE-PAYMENT TODAY!

CONTACT US:

General Inquiries: Henro Pretorius +27 82 324 6397

Sales: Valerie Pienaar +27 82 417 8088





# Hi-TC

## TRAINING CENTRE

### **Addressing Skills shortage with excellence**

Hi-TC is a first-class training centre for aspiring artisans. The centre rose from the ashes of the former Evraz Highveld Steel. Highveld Industrial Park (HIP) revived the training centre in light of the skills shortage the country is currently facing. The training centre once formed an integral part of skills development, and HIP saw the potential to uplift the eMalahleni community with the new training centre, Hi-TC, which could assist in addressing the current skills shortage.

To date, the Hi- TC have trained over 540 students from the local community of eMalahleni. The training centre has the ability to train approximately 400 apprentices a year in various disciplines, and the vision is to close the skills gap by providing quality skills training in the Mpumalanga area.

Contact Hi-TC:

Tell: (013)010-6002

Email: [enquiries@hitraining.co.za](mailto:enquiries@hitraining.co.za)







# HIGHVELD

## LABORATORY SERVICES

Highveld Laboratory Services is yet another success story in the series of successes as a result of the revival and renewal of Highveld Industrial Park (HIP). Highveld Laboratory Services is a tenant at HIP that renders support services to other tenants in the Park.

But, as a commercial laboratory, these services are available to customers outside of the Park as well. The Laboratory was originally equipped to supply services and support to a fully integrated Steelworks, but was placed in care and maintenance after Evraz Highveld Steel ceased production in 2015.

In 2017 the Laboratory was registered as a separate business entity, Highveld Laboratory Services PTY, which is no longer in business rescue.

Contact HIP Lab Services

Tel: (013) 590-1969

Email: [tanyac@hipark.co.za](mailto:tanyac@hipark.co.za)







# **Lunch Box**

## **A Taste of Success at HIP**

**You might wonder what can possibly make a normal work day better, the answer is easy. A great place, right on your doorstep, where you can get good coffee and something delicious to eat. For Highveld Industrial Park (HIP) this place is The Lunch Box.**

**HIP recently went over for a cup of coffee to get acquainted with everyone at The Lunch Box, but also to check out what is on the lunch menu.**

**The Lunch Box has been a tenant at HIP for little over six months and have settled in great, causing a stir in the Park with their take away coffee and great food. You will be thoroughly surprised with the renovations**

**The Lunch Box did if you keep in mind that the space was previously used as a weighbridge office, definitely no lack of entrepreneurial creativeness.**

**De Villiers, who came all the way from the Northern Cape, studied catering and discovered the opportunity to run The Lunch Box in HIP.**

**The Lunch Box also takes pre-orders via phone call or WhatsApp to save you time.**

**Place your order by calling or sending a WhatsApp to**

**071 656 7240.**







*We Offer*

## **Holistic Property Solutions**

At MidCity, we provide unmatched management services for commercial and residential properties.

*And more*

Across our interdependent companies we provide solutions for the property industry including utilities & smart metering services, tax & accounting services and property insurance.



*Call us*

today for property peace of mind.

▲ 012 426 3400

▲ [info@midcity.co.za](mailto:info@midcity.co.za)

▲ [midcity.co.za](http://midcity.co.za)

**Your Property Partner**

*for Life*







# Smart Skills Centre

**CHIETA and Highveld Industrial Park (HIP) opened a Smart Skills Centre on July 4th, 2024. Located in the heart of eMalahleni at HIP.**

**The Smart Skills Centre aims to equip local residents with essential digital skills, fostering sustainable livelihoods and contributing to the community's economic growth.**

**The facility boasts a range of tech-enabled learning opportunities, including software development and data science courses, mobile repair training, and support for small, medium, and micro enterprises (SMMEs).**

**CHIETA and HIP have collaborated to bring this vision to life, demonstrating their commitment to enhancing educational resources and creating opportunities for residents. This initiative aligns with their shared goal of promoting sustainable development and improving the quality of life in the region.**

**Contact the Smart Skills Centre:**

**Tel: 013 591 9057**

**Website: [www.hitraining.co.za](http://www.hitraining.co.za)**







# Vula IZANDLA

In an effort to undertake sustainable LED projects, Highveld Industrial Park has launched an NPC to assist our tenants in taking a collective approach to projects that will have a greater impact in our local community.

We believe it is important to enhance our relationships with the local community through various projects and we would like to provide a service to our tenants and partners in which we assist in implementing projects that have been identified.

There are various benefits available to your business by using Vula Izandla. B-BBEE recognition can be claimed on your donations or investments being associated with Vula Izandla.

We are very excited about this initiative and believe it will serve the interests of all stakeholders involved.



B-BBEE level 1 | Collective approach | Corporate Socio-Investment

Vula Izandla a registered NPC to implement and manage projects for you:

- Enterprise Development
- Supplier Development
- Socio-Economic Development

Sustainable initiatives

Local Economic Development







# Mandela Day

## VULA

In honour of Mandela Day, 18 July 2024, Highveld Industrial Park (HIP) hosted a heartwarming fundraiser with a focus on community support and youth empowerment. This special event brought together tenants from across the park for a morning of camaraderie and contribution towards a noble cause.

The initiative was aimed at raising funds for Vula Izandla, which means "to give with open hands". Vula is a non-profit organisation (NPO) that takes delight in supporting and fostering community relations and Socio-Economic Development in rural communities.

One of the focus areas is dedicated to supporting youth development through sports. By coming together to support Vula, the tenants demonstrated their commitment to making a positive impact on the lives of young people in the Vosman area.

Thank you to all participants.

B-BBEE level 1 | Collective approach | Corporate Socio-Investment

Vula Izandla a registered NPC to implement and manage projects for you:

- Enterprise Development
- Supplier Development
- Socio-Economic Development

Sustainable initiatives

Local Economic Development







**CLIENT PORTFOLIO**

**OUR TENANTS**